






PRESENTA | PRESENTS | PRESENTE

Opera

-  La nostra nuova OPERA, il tuo nuovo PANORAMA
-  Our new OPERA, your new PANORAMA
-  Notre nouvelle OPERA, votre nouveau PANORAMA



Opera


LA FAMIGLIA DI SOLUZIONI PANORAMICHE | THE FAMILY OF PANORAMIC SOLUTIONS | LA FAMILLE DES SOLUTIONS PANORAMIQUES





OPERA 3D CEPH

L'ESCLUSIVO SISTEMA 3 IN 1
THE EXCLUSIVE 3 IN 1 SYSTEM
LE SYSTÈME EXCLUSIF 3 EN 1




 L'esclusivo sistema **tre-in-uno** integra le funzioni 2D e quelle 3D all'analisi cefalometrica.


 The exclusive **three-in-one** System integrates the 2D and 3D functions to the cephalometric analysis.

 Le système unique **trois-en-un** intègre les fonctions 2D et 3D à l'analyse céphalométrique.


OPERA

 In aggiunta alle caratteristiche del 3D, questo modello è equipaggiato di un **braccio per le immagini cefalometriche** ed il rivelatore CR2430, un pannello flat con tecnologia CR con **lettore d'immagini incorporato** che ottiene immagini cefalometriche in alta definizione 24 x 30cm in meno di **2 secondi**, utilizzando la tecnologia del "single shot".

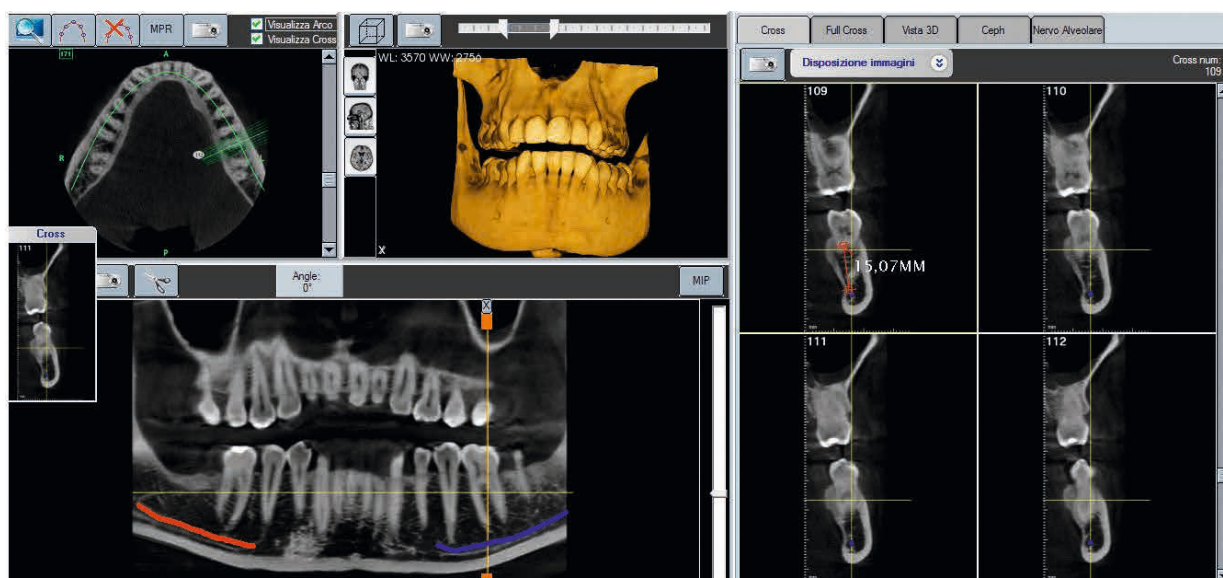
- Flat Panel CMOS con un'area attiva di 13 x 13 cm e 100nm pixel
- Vero FOV 8,5 x 8,5 (not stitching)
- Immagini cefalometriche 24 x 30 cm in HD
- Immagini volumetriche 8,5 x 8,5
- 13 x 30 cm in 2D

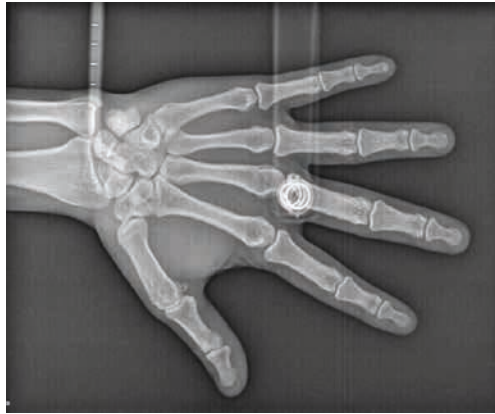
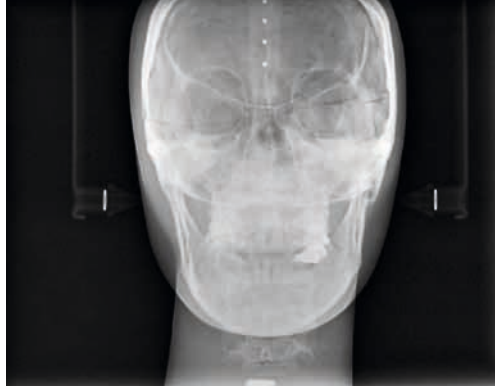
 In addition to the features of the 3D, this model is equipped with an **arm for cephalometric images** and the CR 2430 detector, a CR technology based flat panel with **incorporated image reader** that allows obtaining 24 x 30 cm high-definition cephalometric images in **less than 2 seconds**, using the single-shot technology.

- CMOS Flat panel sensor 13 x 13 cm active area with 100nm pixel size
- Real FOV 8,5 x 8,5 (not stitching)
- 24 x 30 cm HD cephalometric images
- 8,5 x 8,5 volumetric images
- 13 x 30 cm 2D

 Outre les fonctionnalités 3D, ce modèle est équipé d'un **bras pour images céphalométrique** et du détecteur CR2430, d'un panneau plat à technologie CR avec **lecteur d'images intégré** permettant d'obtenir des images céphalométriques haute définition 24 x 30 cm en **moins de 2 secondes**, en utilisant la technologie "coup unique".

- CMOS panneau plat avec une zone active de 13 x 13 cm et des pixels de 100 nm
- CDV réel 8,5 x 8,5 (non assemblage)
- Images céphalométriques 24 x 30 cm en HD
- 8,5 x 8,5 images volumétriques
- 13 x 30 cm en 2D







OPERA 3D CEPH

Sensore Tipo Sensor Type PAN Type de capteur	CMOS
Area sensore Sensor Area Surface du capteur	13 x 13 cm
Tempo di esposizione Exposure time Durée d'exposition	14,3 / 15,0 sec (Bambino / Adulto, PAN standard) 14,3 / 15,0 sec (Child / Adult, Standard PAN) 14.3 / 15.0 sec (Enfant / Adulte, PAN standard)
Gamma dinamica Dynamic range Plage dynamique	14 bit
PROGRAMMI PAN IMAGING PAN IMAGING PROGRAMS PROGRAMMES DE PAN IMAGING	Panoramici per adulti Adult panoramic Panoramique Adulte
	Bambino panoramico Child panoramic Enfant panoramique
	Opzione PAN a 3 livelli Option 3 layer focal PAN Option 3 couche focale PAN
	ATM chiuso / bocca aperta TMJ closed / open mouth TMJ bouche fermée / ouverte
	Sinus
	Panoramica settoriale Sectorial panoramic Panoramique sectoriel <ul style="list-style-type: none"> • Emi Panoramic R Emi Panoramic R Emi Panoramic R • Emi Panoramic L Emi Panoramic L Emi Panoramic L • Pan a bassa dose Low dose Pan Pan à faible dose • Orto panoramica Ortho panoramic Ortho panoramique <ul style="list-style-type: none"> • Incisivi Incisors Incisives • Bitewing R - Bitewing L - Bitewing R + L
Selezione del paziente Patient selection Sélection du patient	Adulto / bambino, 3 dimensioni per tutte le modalità Adult / child, 3 size for all modalities Adulte / enfant, taille 3 pour toutes les modalités

GENERATORE DI RAGGI X X RAY GENERATOR GENERATEUR DE RAYONS X

Tipo di generatore Generator type Type de générateur	DC ad alta frequenza High frequency DC DC haute fréquence
Punto focale Focal spot Point focal	0,5 mm
Filtrazione totale Total filtration Filtration totale	> 2,5 mm Aleq a 70 kV) > 2,5 mm Aleq at 70 kV) > 2,5 mm Aleq à 70 kV)
Radiazione di dispersione Leakage radiation Rayonnement de dispersion	< 0.5 mGy/h a 85 kV 10 mA 15s. duty cycle 1/8 secondo IEC 60601-2-63 < 0.5 mGy/h at 85 kV 10 mA 15s. duty cycle 1/8 according to IEC 60601-2-63 < 0,5 mGy/h à 85 kV 10 mA 15s. cycle de travail 1/8 selon IEC 60601-2-63
Tensione anodica Anodic voltage Tension anodique	61 ÷ 85 kV, passaggio 3 kV 61 ÷ 85 kV, step 3 kV 61 ÷ 85 kV, étape 3 kV
Corrente anodica Anodic current Courant anodique	4 ÷ 10mA 9 gradini 4 ÷ 10mA 9 steps 4 ÷ 10mA 9 étapes
Requisito di alimentazione Power requirement Plage dynamique	230 V, 10 A, monofase, (50/60 Hz) 230V, 10A, single phase, (50/60Hz) 230V, 10A, monophasé, (50/60Hz)
Peso Weight Poids	95 Kg
Dimensioni Dimensions Dimensions	(H x L x P) 2230 mm x 920 mm x 1070 mm (H x W x D) 2230 mm x 920 mm x 1070 mm (H x L x P) 2230 mm x 920 mm x 1070 mm

IMMAGINI 3D | 3D IMAGING | IMAGERIE 3D

Modalità di imaging Imaging modalities Modalités d'imagerie	Dentizione, TMJ R, TMJ L Dentition, TMJ R, TMJ L Dentition, TMJ R, TMJ L
Campo visivo Field of view Champ de vision	8,5 cm x 8,5 cm (altezza x diametro) 8,5cm x 8,5cm (height x diameter) 8,5 cm x 8,5 cm (hauteur x diamètre)
Dimensione del pixel del rivelatore Detector pixel size Décteur de taille de pixel	100µm (200µm nel binning 2 x 2) 100µm (200µm in binning 2x2) 100µm (200µm en binning 2 x 2)
Dimensione del voxel Voxel size Taille du voxel	160 µm
Tasso di acquisizione Acquisition rate Taux d'acquisition	2 fotogrammi per grado 2 frames per degree 2 images par degré
Rotazione testata del tubo Tube head rotation Rotation de la tête du tube	230 °
Range dinamico Dynamic range Plage dynamique	14 bit gray level (max 16.384) Plage dynamique niveau de gris 14 bits (max 16.384)
N. di frame acquisiti N. of acquired frames Nombre d'images acquises	460
Scan time / Exp.time	15s. / 9,2s.
Tempo di ricostruzione 3D 3D reconstruction time Temps de reconstruction 3D	<10s.

IMMAGINI CEFALOMETRICHE CEPHALOMETRIC IMAGING IMAGERIE CÉPHALOMÉTRIQUE

Tipo di sensore Sensor Type Capteur Plaque phosphore	Piastra al fosforo FLAT PANEL con acquisizione e trasmissione immagini direttamente a bordo (non è necessario rimuovere la piastra al fosforo) FLAT PANEL phosphor plate with direct on-board image acquisition and transmission (no need to remove the phosphor plate) FLAT PANEL avec acquisition et transmission d'images intégrées (pas besoin de retirer la plaque luminescente)
Formato immagini Image Format Format d'image	24cm x 30cm
Tipo di esposizione Exposure type Type d'exposition	Scatto singolo Single shot Coup unique
Tempo di acquisizione Acquisition time Temps d'acquisition	2s
Impostazione e tempo di esposizione Setting and exposure time Temps de prise et d'exposition	2mAs - 30mAs (0,2-3 s)
PROGRAMMI CEPH CEPH PROGRAMS PROGRAMMES CEPH	L / L P / A A / P
Peso Weight Poids	125 Kg
Dimensioni Dimensions Dimensions	(H x L x P) 2230 mm x 1720 mm x 1070 mm (H x W x D) 2230 mm x 1720 mm x 1070 mm (H x L x P) 2230 mm x 1720 mm x 1070 mm

